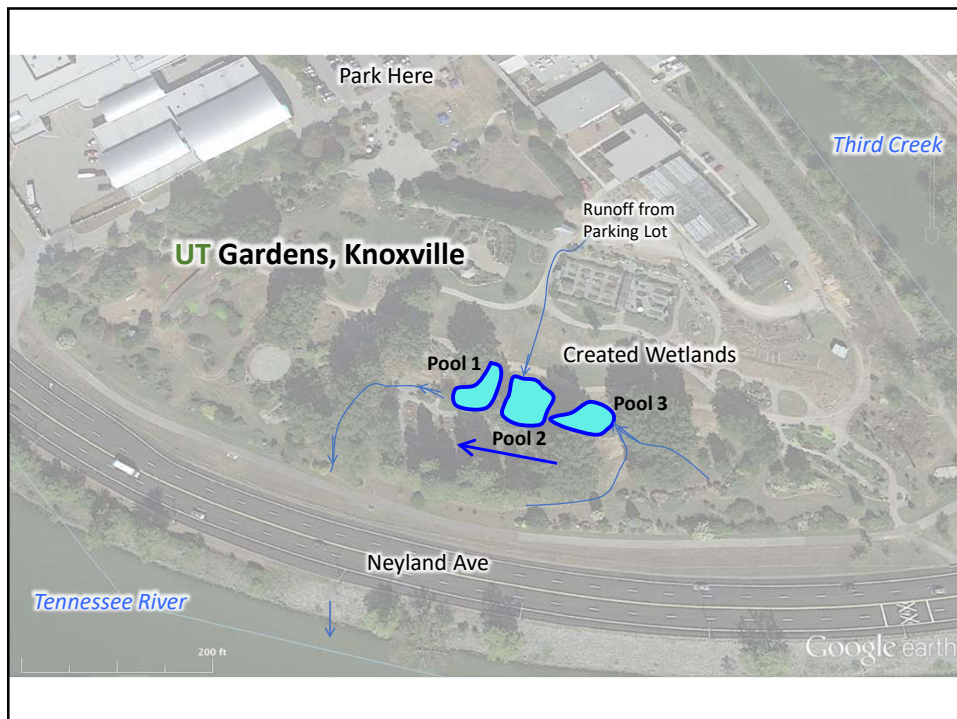
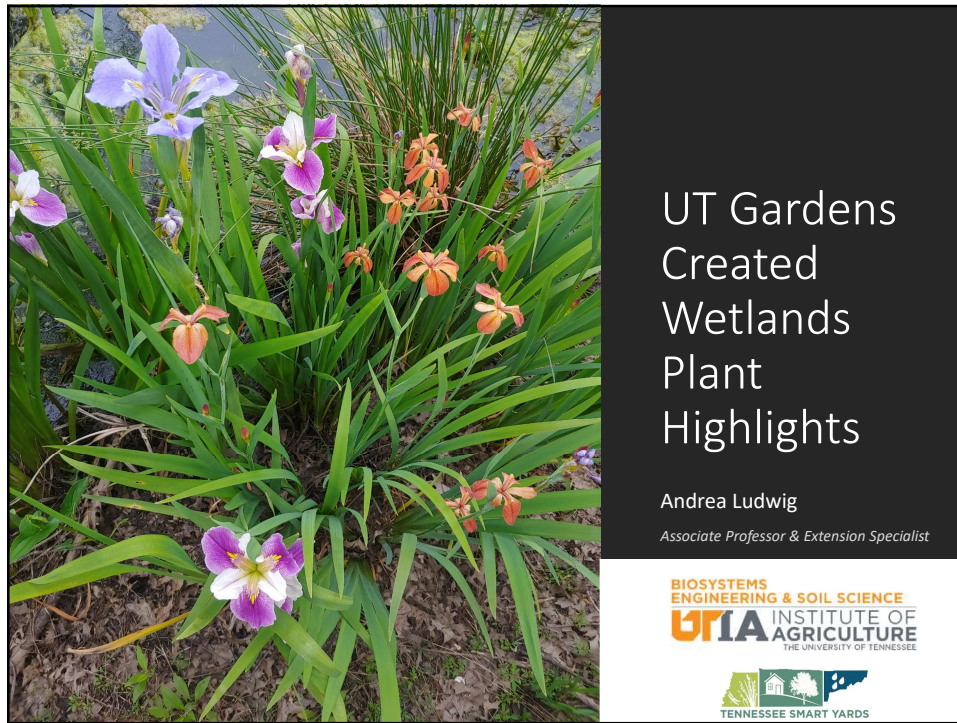
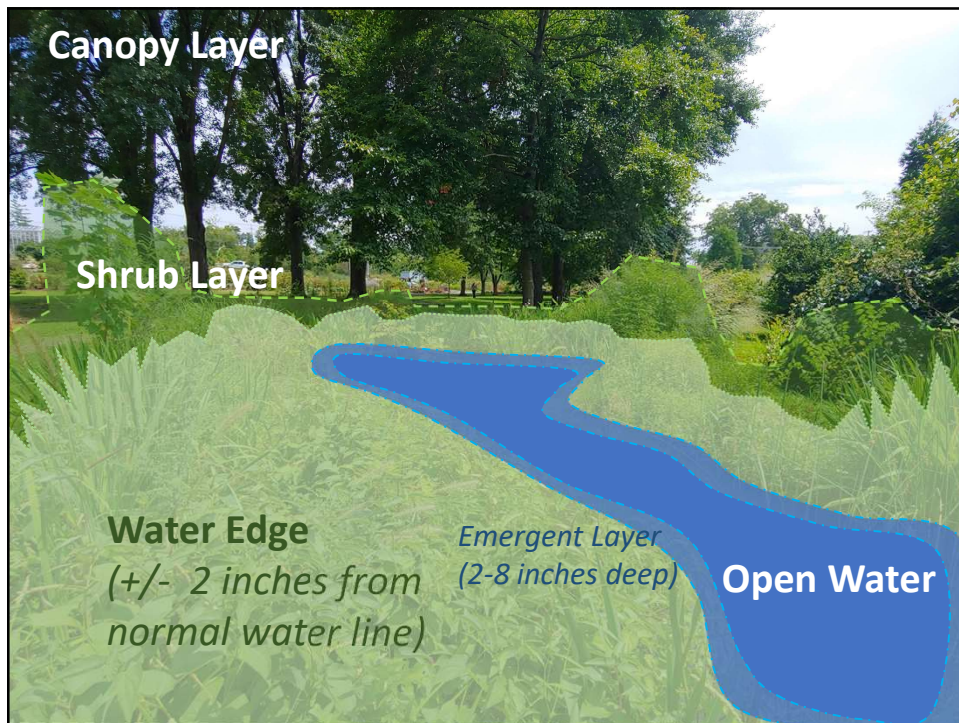
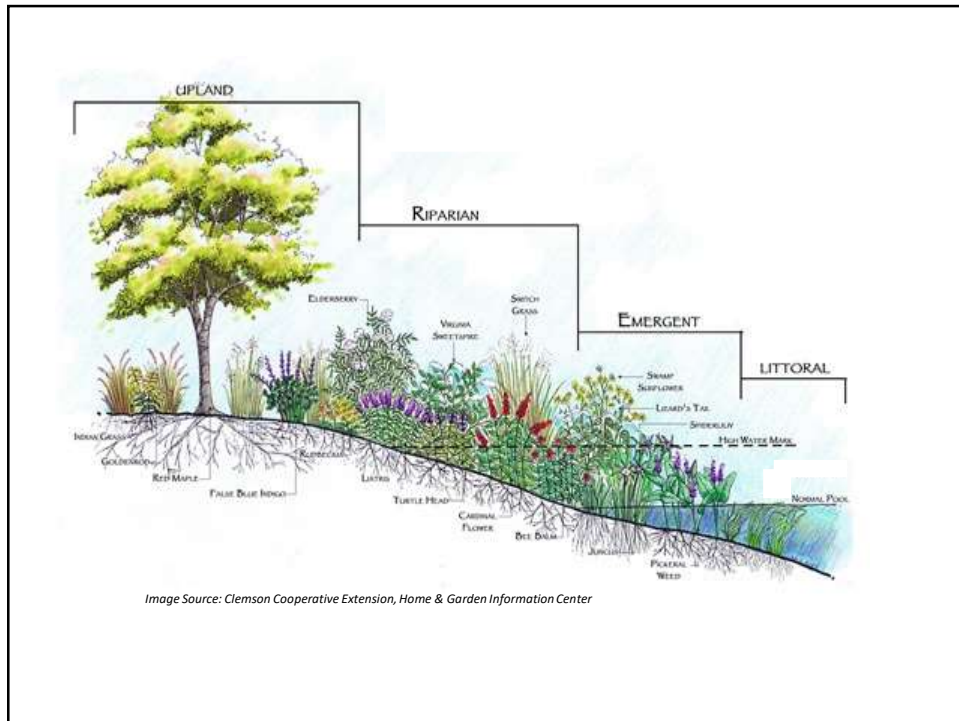


## UT Gardens Wetland Plants - Draft January 2020

Planting Zone	Species	Common Name	Height (ft)	Spread (ft)	Comments
Rushes, Sedges, Grasses and Herbaceous					
Riparian/Border	<i>Chasmanthium latifolium</i>	River Oats	2 to 5	1 to 2.5	Self-seeds and may spread aggressively
	<i>Eutrochium maculatum</i>	Joepyee Weed	4 to 7	3 to 4	
	<i>Helianthus angustifolius</i>	Swamp Sunflower	3 to 6	2 to 4	Tall branches splay out in late season
	<i>Hibiscus moscheutos</i>	Swamp Rose Mallow	4 to 5	2 to 3	
	<i>Impatiens capensis</i>	Jewelweed	2 to 5	1.5 to 2.5	May form colonies
	<i>Lobelia cardinalis</i>	Cardinal Flower	2 to 4	1 to 2	Needs soil disturbance for seed germination
	<i>Lobelia siphilitica</i>	Great Blue Lobelia	2 to 3	1 to 1.5	Needs soil disturbance for seed germination
	<i>Muhlenbergia capillaris</i>	Purple Muhly	2 to 3	2 to 3	
Water Edge (+/- 2 inches of normal pool)	<i>Vernonia gigantea</i>	Ironweed	5 to 8	3 to 6	
	<i>Carex crinita</i>	Fringed Sedge	1 to 3	1 to 2	
	<i>Carex lurida</i>	Shallow Sedge	1.5 to 3	1 to 2	
	<i>Elymus virginicus</i>	Virginia Wildrye	2 to 4	1 to 2	Vigorous self-seeder
	<i>Iris versicolor</i>	Blue Flag Iris	2 to 2.5	2 to 2.5	
	<i>Iris virginica</i>	Southern Blue Flag Iris	1 to 3	1 to 3	
	<i>Juncus effusus</i>	Soft Rush	2 to 4	2 to 4	Spreading clumper, evergreen in warm climates, may become invasive
Shallow water (2-4")	<i>Scirpus cyperinus</i>	Wool Grass	3 to 5	2 to 4	
	<i>Acorus americanus</i>	Sweet Flag	2 to 2.5	1.5 to 2	Creeping rhizomes can form large colonies
	<i>Leersia oryzoides</i>	Rice Cutgrass	2 to 3.5	2 to 3	Aggressive spreader
	<i>Peltandra virginica</i>	Arrow Arum	1.5 to 2	1.5 to 2	
	<i>Pontederia cordata</i>	Pickereel Weed	2 to 4	1.5 to 2.5	Vigorous spreaders
	<i>Sagittaria latifolia</i>	Arrowhead	1 to 4	1 to 3	Spreads with rhizomes and self-seeds
	<i>Saururus cernuus</i>	Lizard Tail	1 to 2	1 to 2	
	<i>Schoenoplectus tabernaemontani</i>	Softstem Bulrush	3 to 5	3 to 6	Creeping rhizomes can spread aggressively
Woody Plants					
Trees	<i>Acer rubrum</i>	Red maple	50 to 75		Waters Edge
	<i>Betula nigra</i>	River Birch	40 to 70		Waters Edge
	<i>Platanus occidentalis</i>	Sycamore	75 to 100		Waters Edge
	<i>Quercus shumardii</i>	Shumard Oak	50 to 80		Waters Edge
Shrubs	<i>Amorpha fruticosa</i>	Indigo bush	4 to 12	6 to 15	Tolerates seasonally wet soils
	<i>Cephalanthus occidentalis</i>	Buttonbush	5 to 12	4 to 8	Will grow in standing water
	<i>Cornus amomum</i>	Silky dogwood	6 to 12	6 to 12	Tolerates seasonally wet soils
	<i>Cornus sericea</i>	Red osier dogwood	6 to 9	6 to 9	Tolerates seasonally wet soils
	<i>Hamamelis virginiana</i>	American Witch Hazel	15 to 20	15 to 20	Tolerates seasonally wet soils
	<i>Hydrangea arborescens</i>	Wild Hydrangea	3 to 5	3 to 5	Tolerates seasonally wet soils
	<i>Ilex verticillata</i>	Winterberry	3 to 12	3 to 12	Tolerates seasonally wet soils
	<i>Illex glabra</i>	Inkberry	5 to 8	5 to 8	Tolerates seasonally wet soils
	<i>Lindera benzoin</i>	Spicebush	6 to 12	6 to 12	Tolerates seasonally wet soils
	<i>Sambucus nigra</i>	Elderberry	8 to 20	8 to 20	Tolerates seasonally wet soils



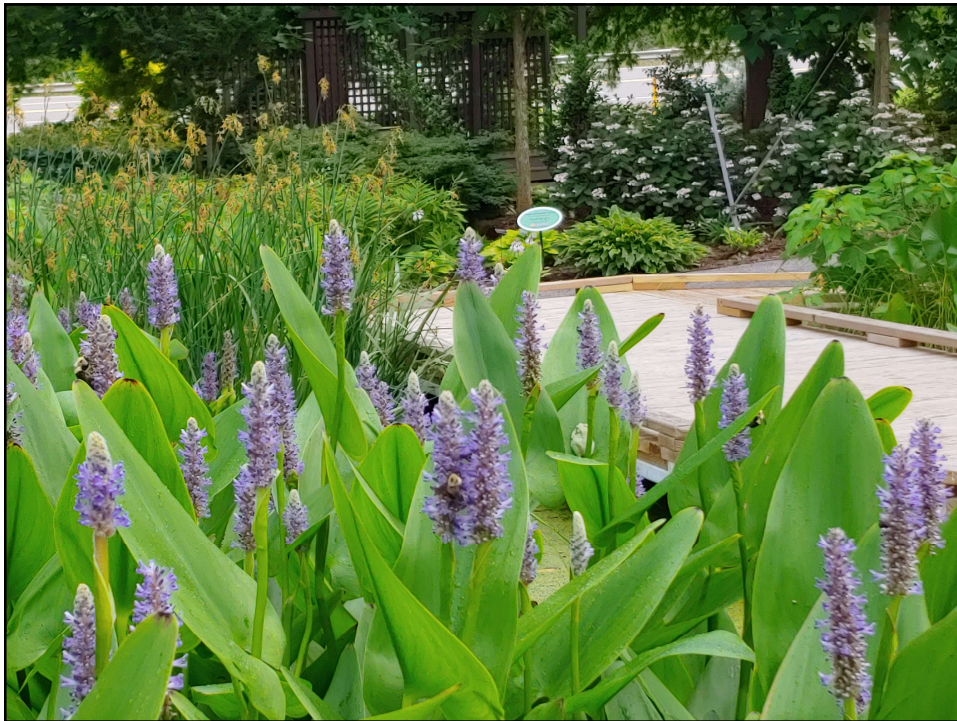






- *Pontederia cordata*
- 2-4 ft tall, 2-4 ft spread
- Water Edge
- Full sun
- June to October

Pickerelweed







Broadleaf  
Arrowhead

- *Sagittaria lancifolia*
- 1-4 ft tall, 1-3 ft spread
- Emergent Zone
- Full sun to part shade
- May to June bloom



Soft Rush

- *Juncus effusus*
- 2-4 ft tall, 2-4 ft spread
- Wet zone
- Full sun
- June to Aug seedheads



- *Iris versicolor*
- *Iris virginica*
- *Iris fulva*
- 2-2.5 ft tall, 2-2.5 ft spread
- Wet to moderate zone
- Full sun to part shade
- May to June bloom

Blueflag Iris





## Swamp Milkweeds

- *Asclepias Incarnata*
- 2-5 ft tall, 2-3 ft spread
- Wet to dry zone options
- Full sun
- Orange, pink, mauve
- July to Aug



## Sweet Flag

- *Acorus Americanus*
- 2-2.5 ft tall, 2-2.5 ft spread
- Water Edge
- Full sun to part shade
- April to June bloom





- *Saururus cernuus*
- 1.5-2 ft tall, 1-2 ft spread
- Water Edge
- Full sun to part shade
- May to June bloom

Lizards Tail





Fringe Sedge

- *Carex crinita*
- 1-3 ft tall, 1-2 ft spread
- Water Edge



Joe Pye Weed

- *Eupatorium*
- 2-7 ft tall, 1-3 ft spread
- Water Edge
- Full sun to part shade
- July to Sept



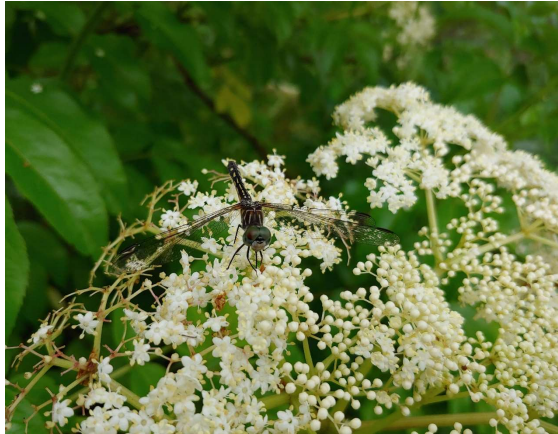


Swamp mallow

- *Hibiscus moscheutos*
- 3-7 ft tall, 2-4 ft spread
- Edge Layer
- Full sun to part shade
- July to September blooms







Elderberry

- *Sambucus canadensis*
- 5-12 ft tall, 5-12 ft spread
- Wetland shrub layer
- Full sun to part shade
- June to July blooms



Button Bush

- *Cephalanthus occidentalis*
- 5-12 ft tall, 4-8 ft spread
- Wetland shrub layer
- Full sun to part shade
- June blooms





- *Amorpha fruticosa*
- 4-12 ft tall, 6-15 ft spread
- Wetland shrub layer
- Full sun to part shade
- April to June

## Indigo Bush



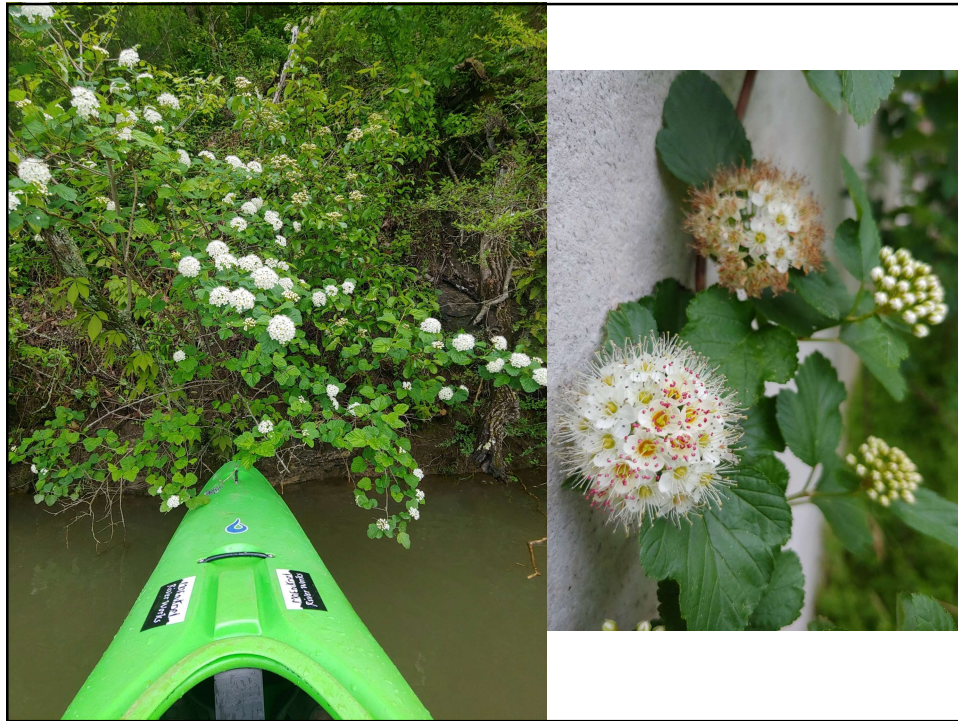




- *Physocarpus opulifolius*
- 5-10 ft tall, 4-6 ft spread
- Slopes, dry zone
- Full sun to part shade
- May to June

Ninebark





## Plant Materials









